

ACADEMY OF ART UNIVERSITY

School of Fine Art Sculpture



Degree Options

AAS, AA, BFA, MA, MFA
Online, On campus
+ UpSkill Classes

The Human Form

A fundamental skill in sculpture is the ability to represent both realistic and unique and personal interpretations of the human form. You'll work representationally and expressively to develop formal head and figure techniques. You will learn how to comfortably and confidently express your personal creative ideas with clay. And you'll develop skills in modeling gestures, figures, and proportions.

Animals And Inanimate Objects

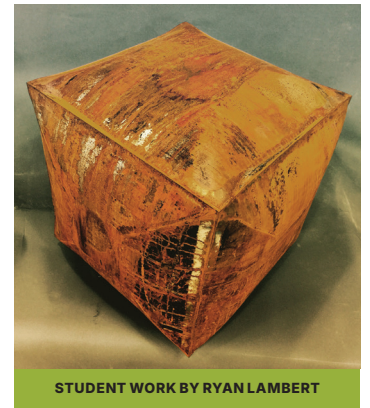
While the human form is often perceived as the primary subject for sculptors, we believe it's important to learn how to sculpt mammals and other animals. You will explore both anatomical realism and abstracted gestural movement of various animals, and you'll use aspects of design, finish, and personal style to create portfolio-ready work.



STUDENT WORK BY YOYO HU



STUDENT WORK BY KELEB PHILLIPS



STUDENT WORK BY RYAN LAMBERT

FOCUS ON SCULPTURE

Academy of Art University's sculpture program (offered in the School of Fine Art) is an immersive, hands-on experience that will teach you the traditional skills you'll need to create both figurative and non-figurative work. We'll expose you to classic methods and industry-standard technologies that can be used to manifest your personal artistic vision in the world.

From the basics of physical studio work to the mind-bending possibilities of digital sculpture, you will navigate the expansive world of recreating and reimagining three-dimensional forms as art. You will graduate with a wide-ranging portfolio of work that demonstrates your knowledge and understanding of sculpture in all of its forms.

Studio Work

Context is a critical element in sculpture. You will learn the importance of contextual elements such as site, scale, surface, form, function, material, intention, and the viewer, to create professional portfolio-level sculpture.

FACILITIES

Metal Shop & Welding Studio

Our welding studio is equipped with industry-standard TIG and MIG welders, power tools, sand blasters, and patina stations for bronze casting. In our metal shop, you'll learn to cut and forge metal on a jet-milling machine, a hydraulic bandsaw, a McEnglevan MIFCO forge, a plasma cutter, 250-amp welders, metal benders, and a drill press.

Studios Dedicated to Wax And Ceramics

Our sculpture center houses a complete wax studio with gating and sprue stations, and a ceramics room with slurry tank, silica sand stations, front-loading computer-programmed electric and gas kilns, Raku kilns, a slab roller, extruder, and a pug mill. You'll have access to a 20-ton hydraulic press and enameling, lost wax casting, and calibrated burnout kilns.

Woodworking Shop, Mold-Making Studios And A 3D Printing Facility

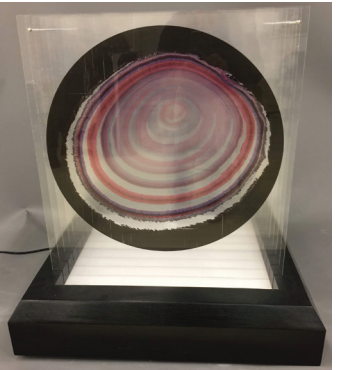
Our wood shop is fully equipped with woodworking tools, table saws, chop saw, bandsaw, drill press, planer, routing table, and a sanding table. Our mold-making studio is equipped for making plaster and rubber molds of any size. We also have access to milling tables, laser cutters, and a 3D printing lab (filled with the latest printers utilizing fila-

ment printing and resin printing) located in our Industrial Design building.

Bronze-Casting Foundry

Learn about the techniques of ceramic shell bronze casting at our foundry in South San Francisco, with our 150-lb crucible, burnout kiln, cut-off station, burr-king sander, and sandblaster.

STUDENT WORK BY RICHARD BLACK



STUDENT WORK BY EMERE NAMETER

Sculpture Courses

- Ceramic Sculpture
- The Art of Mold Making & Casting
- Head & Figure Sculpture
- Metal Fabrication & Welding
- Wood Structures & Construction
- Figure Sculpture
- Animal Sculpture
- Écorché (Anatomical Sculpture)
- Portrait Sculpture
- Glaze Technology
- Wheel-Thrown Sculpture
- Bronze Sculpture
- 3D Printing for Sculpture



STUDENT WORK BY CHARITY FLOWERS



STUDENT WORK BY RYAN PU



STUDENT WORK BY STEPHEN BOUSKA

LEARN MORE

